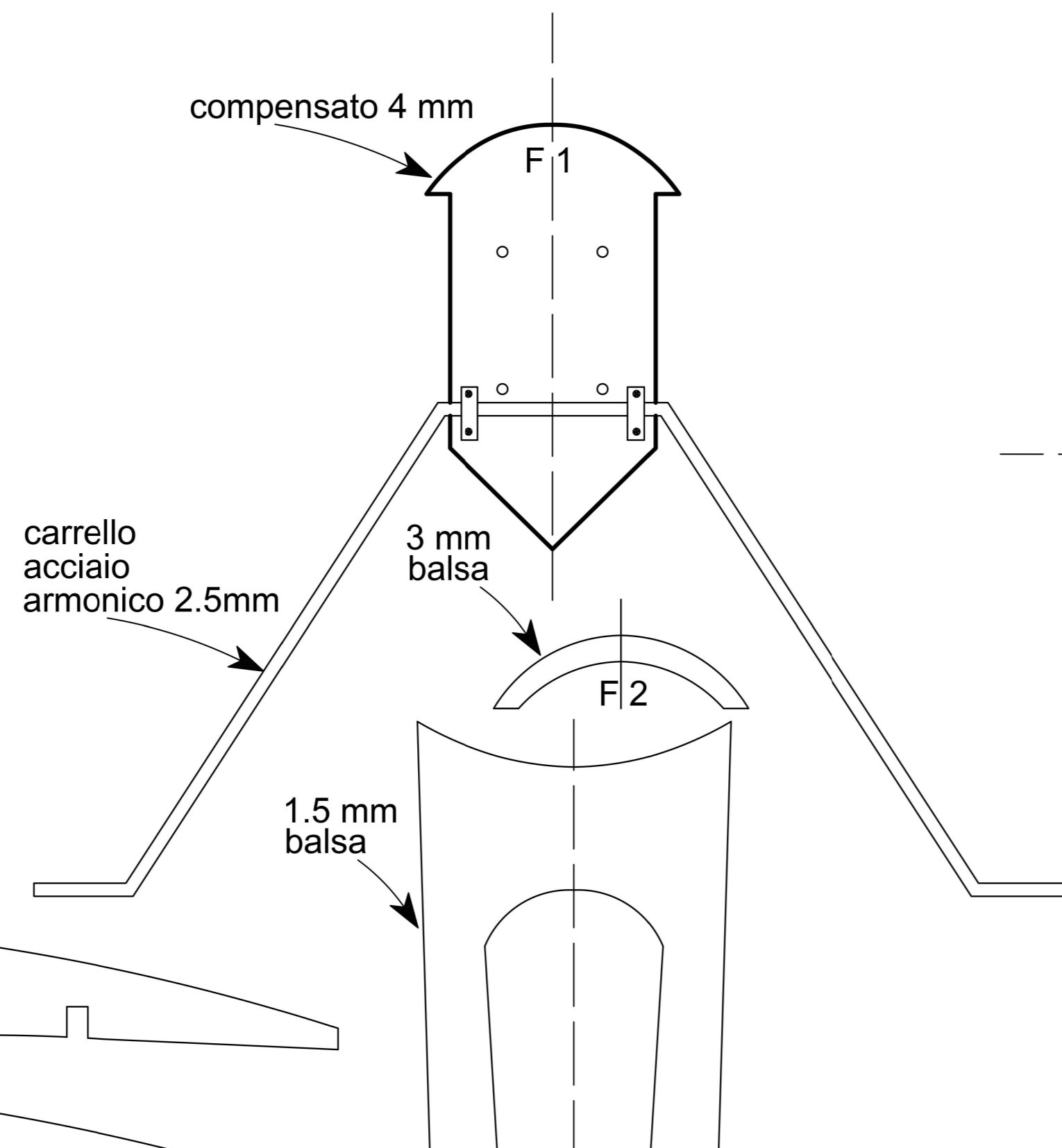


Airborne

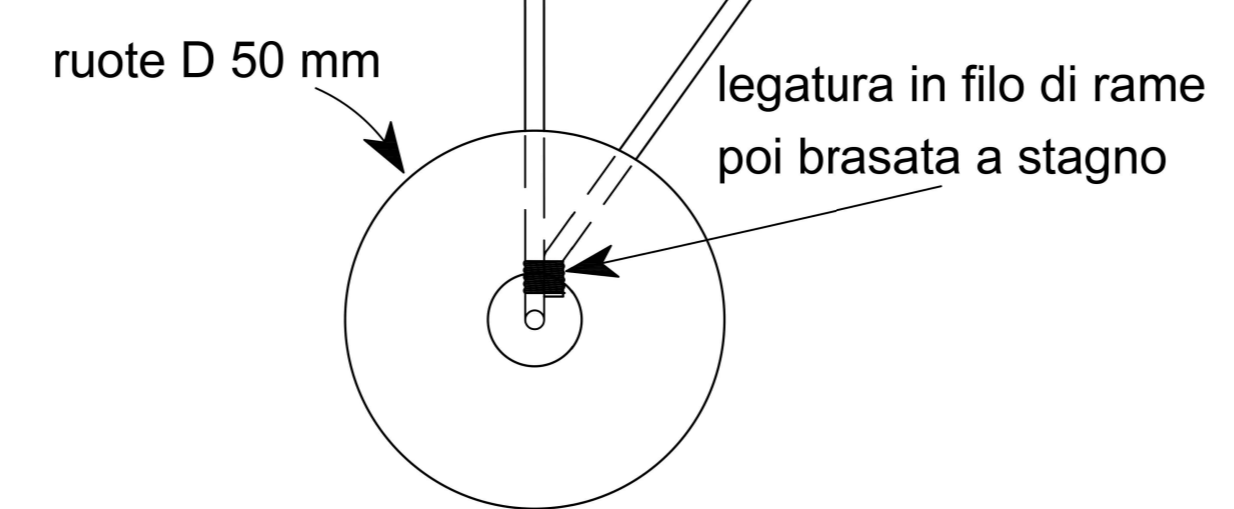
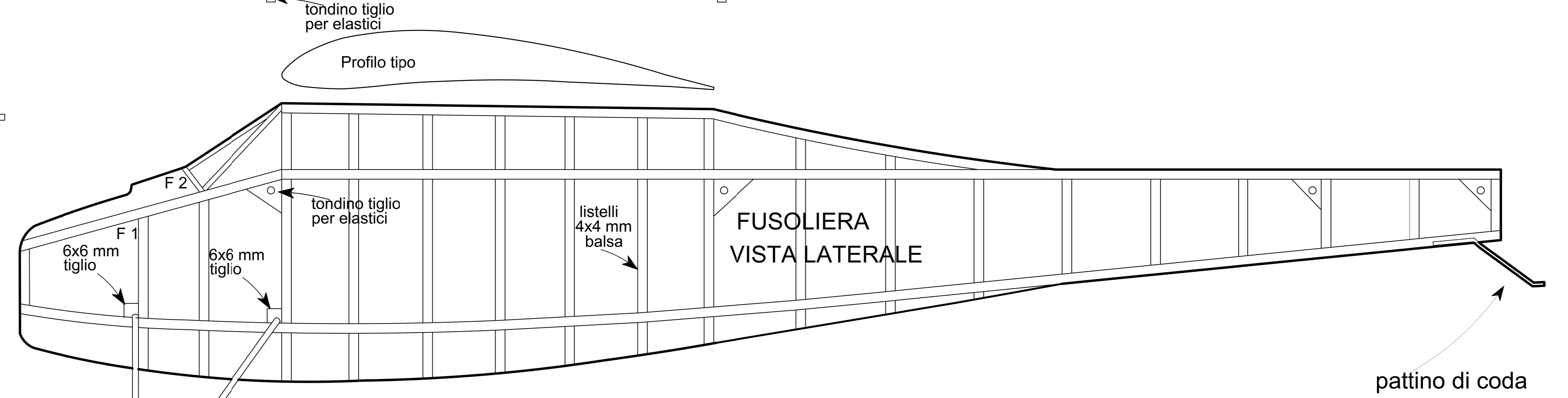
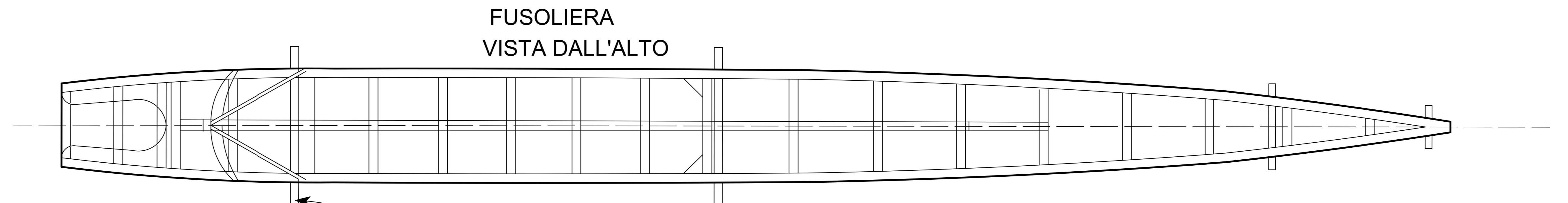
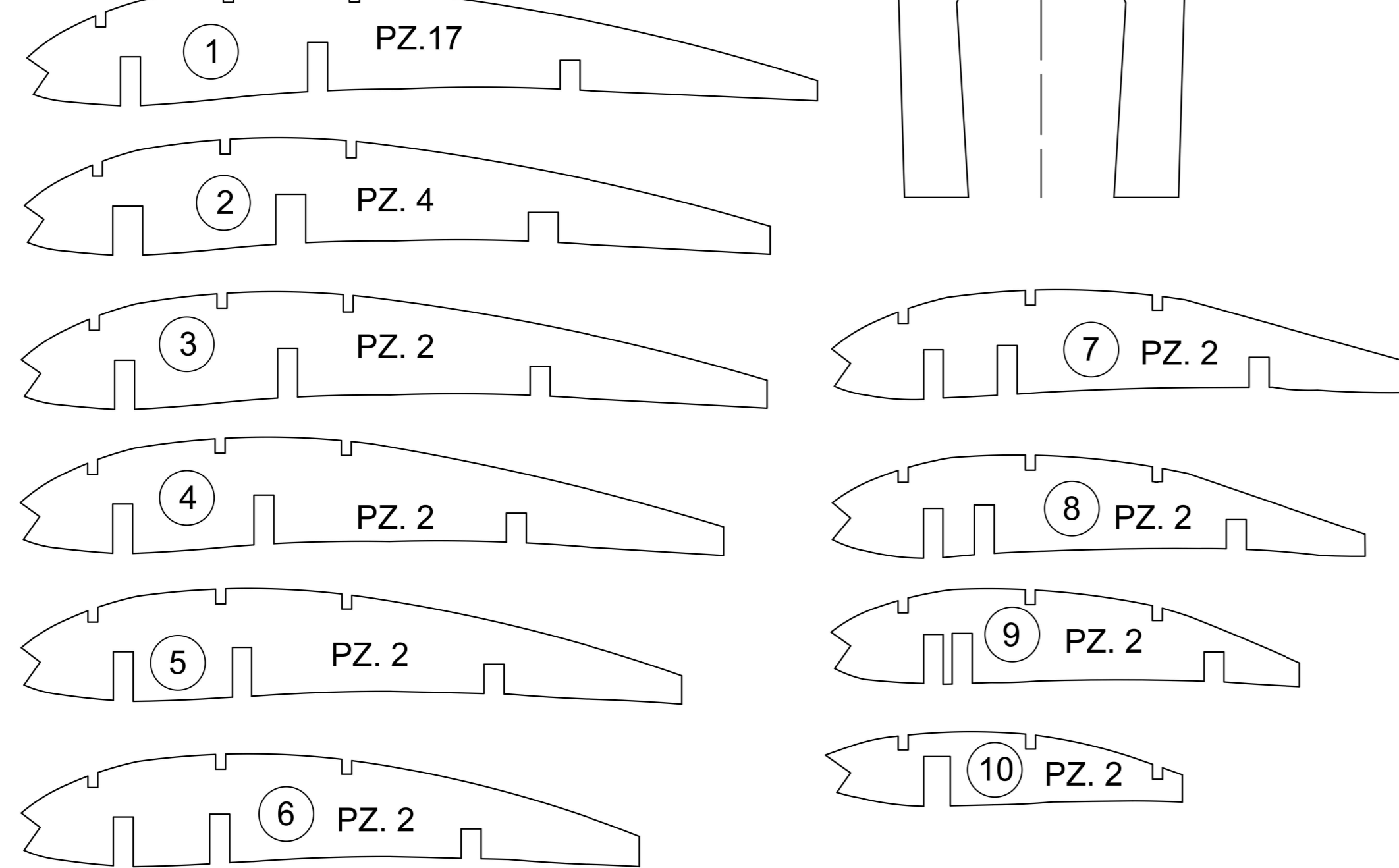
Chet Lanzo 's Airborne

(1.38m) Span

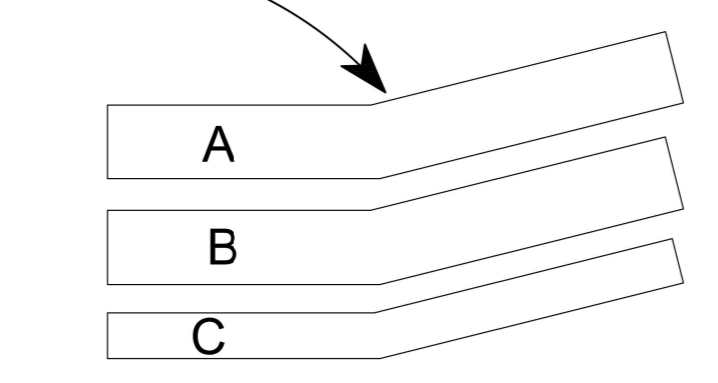
peso minimo 530 Gr
motore a scoppio max 2 cc
elettrico libero quantita celle libera
altimetro regolato a 100 mt
tempo motore



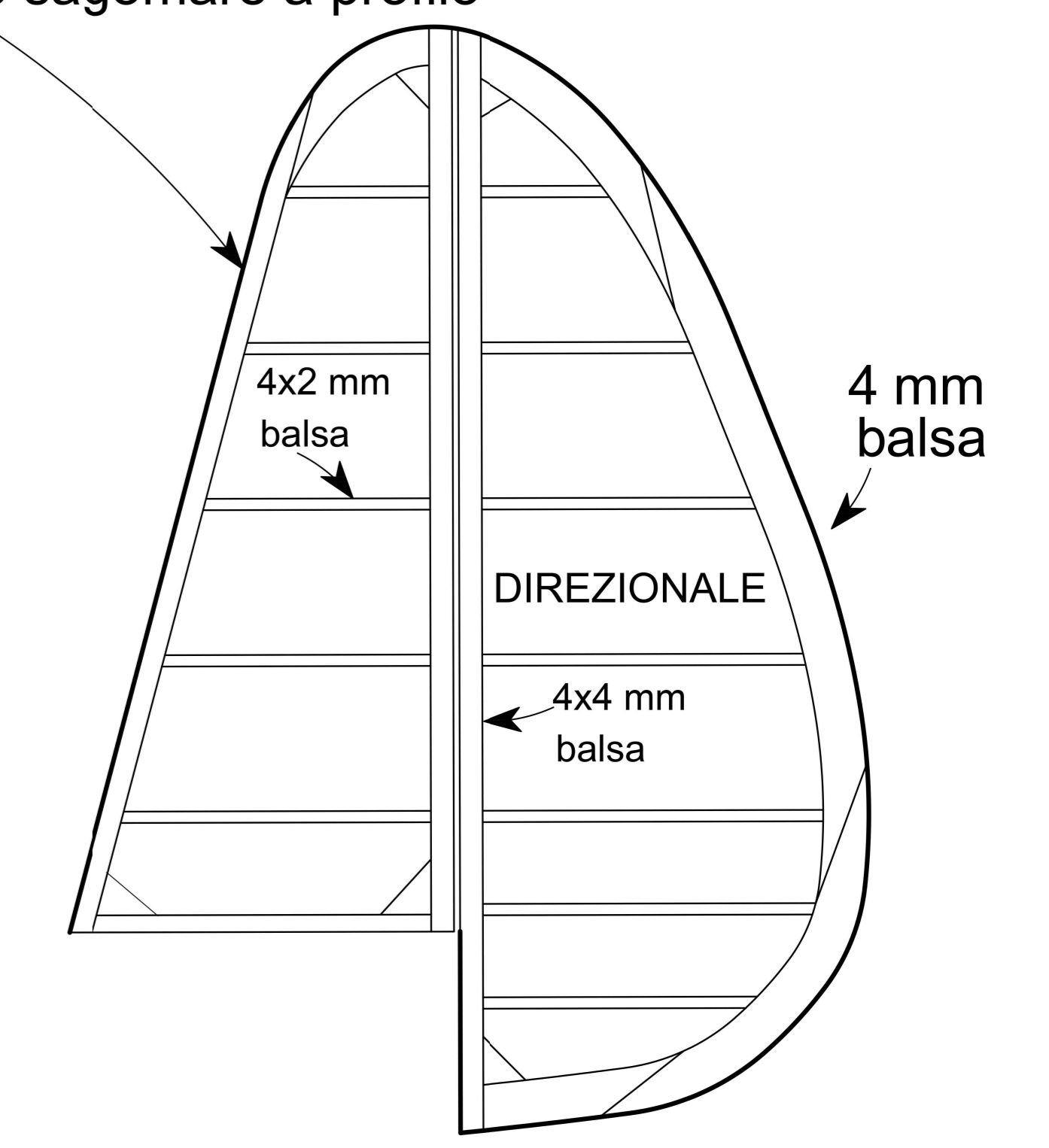
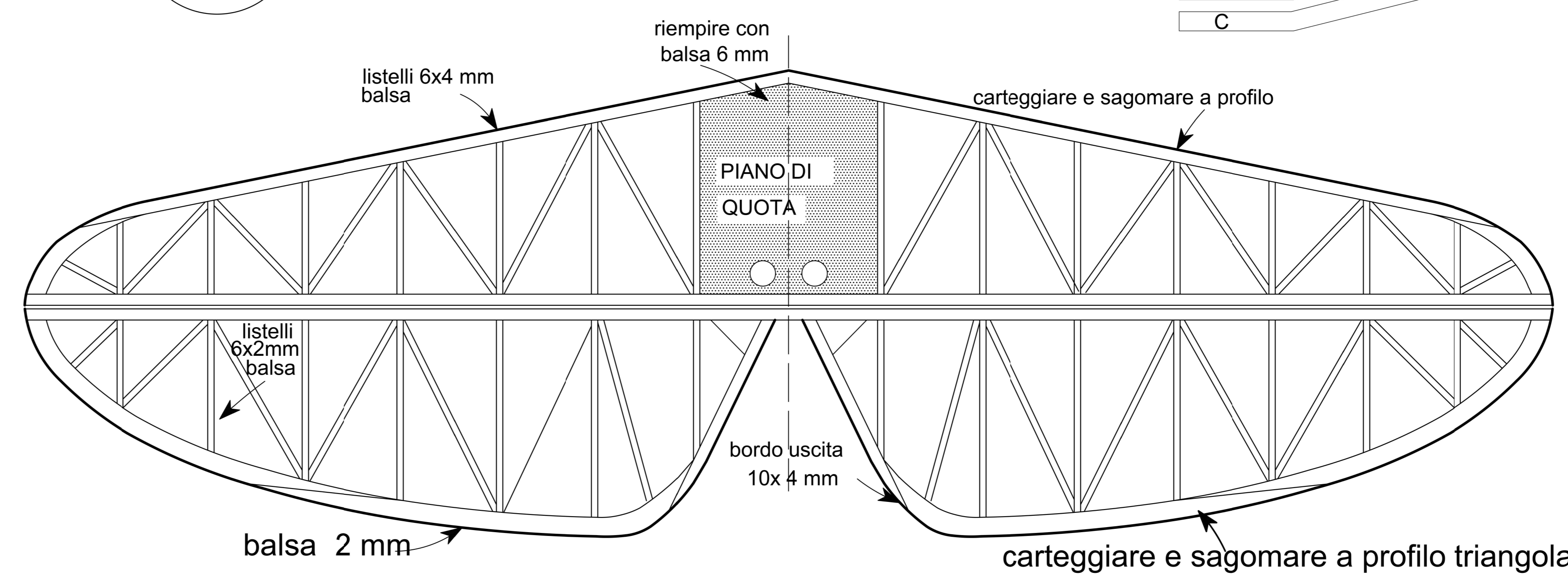
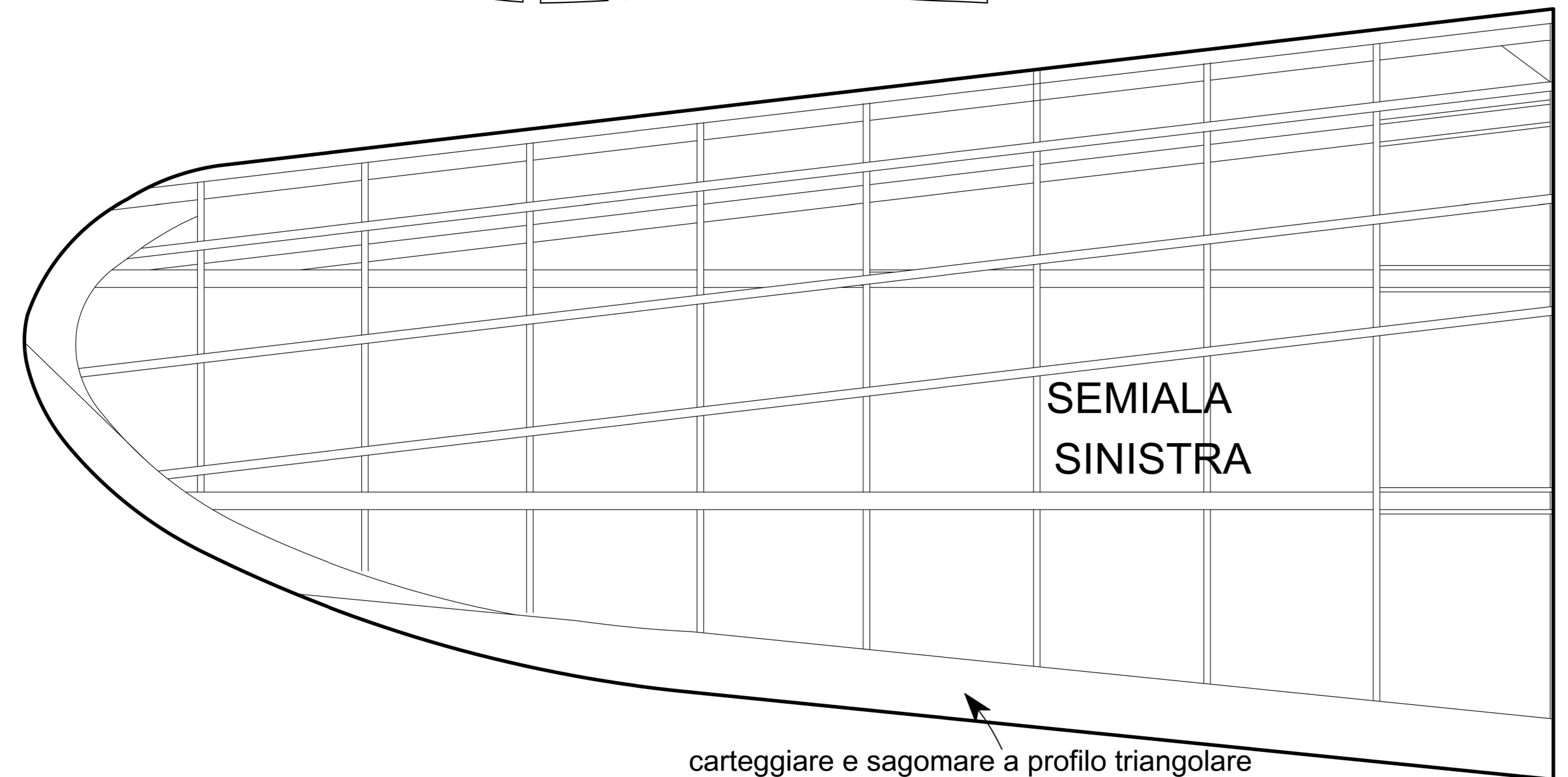
tutte le centine balsa 2.5 mm



rinforzi diedro alare compensato 1mm

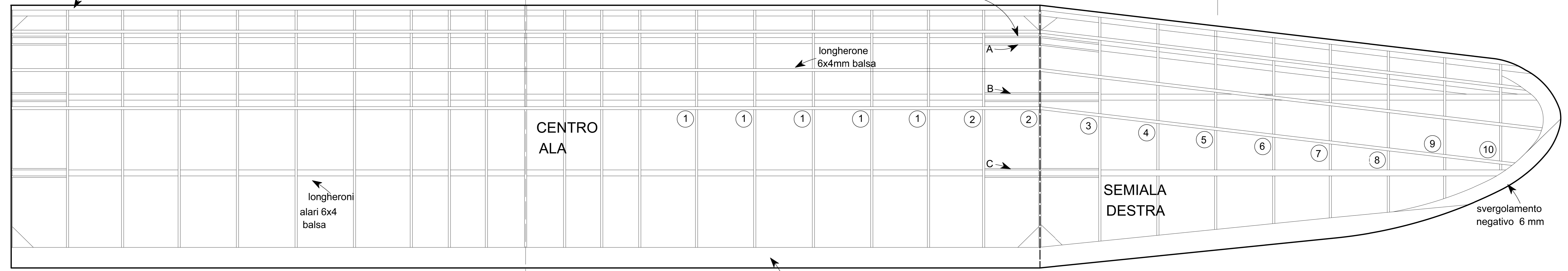


carteggiare e sagomare a profilo



carteggiare e sagomare a profilo

Bordo di entrata listello balsa 8x8 mm a spigolo



carteggiare e sagomare a profilo triangolare